

**Maximum safety  
and comfort in  
sensitive areas.**

### **Very fast running actuators from Belimo**

Belimo's very fast running actuators operate air dampers quickly, precisely as well as quietly and immediately ensure a controlled supply and extract air situation in laboratories, clean rooms, hospitals and research institutes.

# Fast, precise and low-noise control.

## Maximum safety in sensitive areas

### Demand-driven extract air control for fume hoods

In the case of fume hoods, the very fast running actuators play an important role and guarantee correct operation along with a high level of working comfort in situations of demand-driven extract air control.

Very often, the control of the volumetric flow of extract air in fume hoods depends on the position of the front slide. This is namely the case when it is crucial that dangerous gases are extracted as quickly and safely as possible when the front slide is opened.

Belimo very fast running actuators make a reliable contribution in this safety system and position the extract air damper quickly, precisely and quietly in accordance with the setpoint specification.

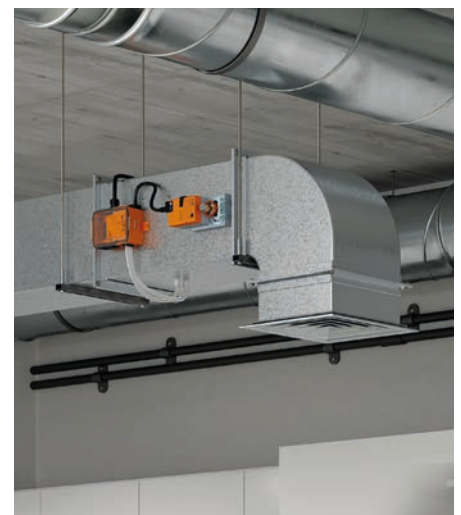


### Volumetric flow and pressure control in sensitive areas

For both volumetric flow control and room pressure control in sensitive areas, the very fast running actuators (..Q24A-VST) together with the VRU controller ensure a controlled situation for supply and extract air.

The modular design of the VAV-Universal product range with integrated  $\Delta p$  sensor enables the ideal combination of controller and damper motorisation for each variable air volume, duct pressure and room pressure application.

The damper actuator range for the VRU controller with plug-and-play function, supports very fast running actuators with or without fail-safe.



# Turn, push, pull quickly and reliably.

## Longevity guaranteed

### Very fast running actuators from Belimo can be used in a variety of applications

Other areas of application for the very fast running actuators are heating and chilling circuits, industrial extraction systems as well as painting and welding systems.

In these applications, they quickly and reliably position the control elements to meet critical system requirements.

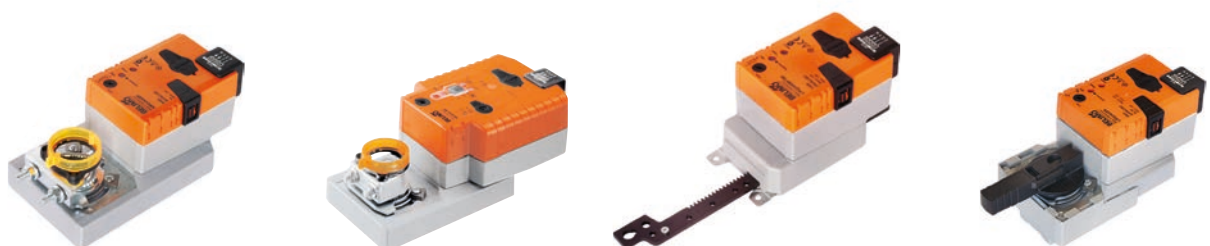
### Large selection of durable actuators with minimal energy consumption

The Belimo very fast running actuators are available as rotary or linear actuators with open/close or modulating control.

Parametrisable types enable optimisation of the running time, torque, operating range and position feedback for the respective application. Cables, form fits and shaft clamps can be individually adapted upon request.

Robust brushless motors, gear and housings guarantee a long service life – even under the harshest conditions.

The automatic current reduction at standstill and the mechanical inhibiting torque lock also reduce energy consumption to a minimum.



# Versatile in power and function.

## Very fast running actuators:

	Nominal torque actuating force	Running time, s	Nominal voltage	Fail-safe	Open/close	3-point	Modulating 2...10 V	Modulating, PP ↔ VRU	Parametrisable	VST plug
<b>Rotary actuators 90°</b>										
LMQ24A	4 Nm	2.5	24 V	-	■	-	-	-	-	-
LMQ24A-SR	4 Nm	2.5	24 V	-	-	-	■	-	-	-
LMQ24A-MF	4 Nm	2.5...10	24 V	-	-	-	-	-	■	-
NKQ24A-1 <sup>1)</sup>	6 Nm	4	24 V	■	■	-	-	-	-	-
NKQ24A-SR <sup>1)</sup>	6 Nm	4	24 V	■	-	-	■	-	-	-
NKQ24A-MF <sup>1)</sup>	6 Nm	4...20	24 V	■	-	-	-	-	■	-
NMQ24A	8 Nm	4	24 V	-	■	-	-	-	-	-
NMQ24A-SR	8 Nm	4	24 V	-	-	-	■	-	-	-
NMQ24A-MF	8 Nm	4...20	24 V	-	-	-	-	-	■	-
NMD230A	8 Nm	20	230 V	-	■	■	-	-	-	-
SMQ24A	16 Nm	7	24 V	-	■	-	-	-	-	-
SMQ24A-SR	16 Nm	7	24 V	-	-	-	■	-	-	-
SMQ24A-MF	16 Nm	7...35	24 V	-	-	-	-	-	■	-
SMD24A	16 Nm	20	24 V	-	■	■	-	-	-	-
SMD230A	16 Nm	20	230 V	-	■	■	-	-	-	-
<b>Linear actuators 100 mm</b>										
LHQ24A100	100 N	3.5	24 V	-	■	-	-	-	-	-
LHQ24A-SR100	100 N	3.5	24 V	-	-	-	■	-	-	-
LHQ24A-MF100	100 N	3.5...15	24 V	-	-	-	-	-	■	-
SHQ24A100	200 N	7	24 V	-	■	-	-	-	-	-
SHQ24A-SR100	200 N	7	24 V	-	-	-	■	-	-	-
SHQ24A-MF100	200 N	7...30	24 V	-	-	-	-	-	■	-
<b>VAV-Universal System Solution VRU</b>										
LMQ24A-VST	4 Nm	2.5	24 V	-	-	-	-	■	-	■
NKQ24A-VST <sup>1)</sup>	6 Nm	4	24 V	■	-	-	-	■	-	■
NMQ24A-VST	8 Nm	4	24 V	-	-	-	-	■	-	■
SMQ24A-VST	16 Nm	7	24 V	-	-	-	-	■	-	■
<b>Valve actuators</b>										
LRQ24A	4 Nm	9	24 V	-	■	-	-	-	-	-
LRQ24A-SR	4 Nm	9	24 V	-	-	-	■	-	-	-
NRQ24A	8 Nm	9	24 V	-	■	-	-	-	-	-
NRQ24A-SR	8 Nm	9	24 V	-	-	-	■	-	-	-
SRQ24A	16 Nm	9	24 V	-	■	-	-	-	-	-

<sup>1)</sup> Fail safe running time, 4 s

For specific product versions with form fits, other cable lengths, etc., contact your local Belimo partner.

**BELIMO Automation AG**

Brunnenbachstrasse 1, 8340 Hinwil, Switzerland  
+41 43 843 61 11, info@belimo.ch, www.belimo.com

**BELIMO**<sup>®</sup>